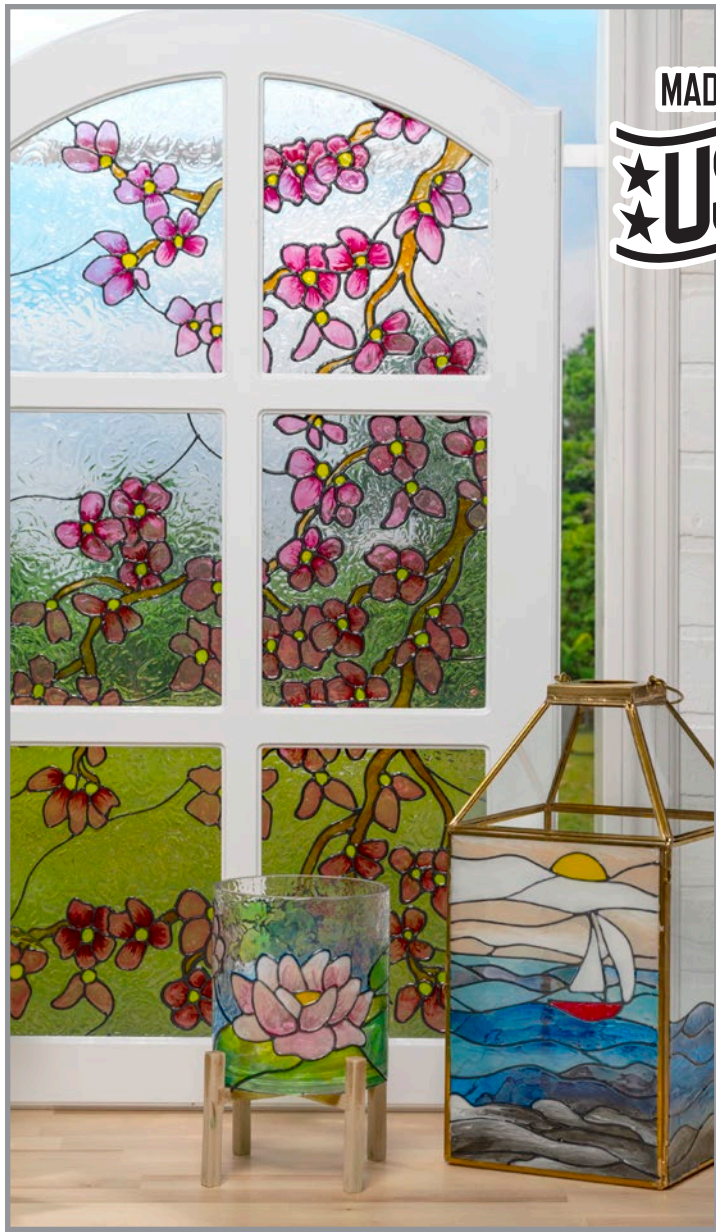


2024 PRODUCT CATALOG



MADE IN
★ USA ★



Create Realistic Stained Glass Effects Windows, Doors, & Decor

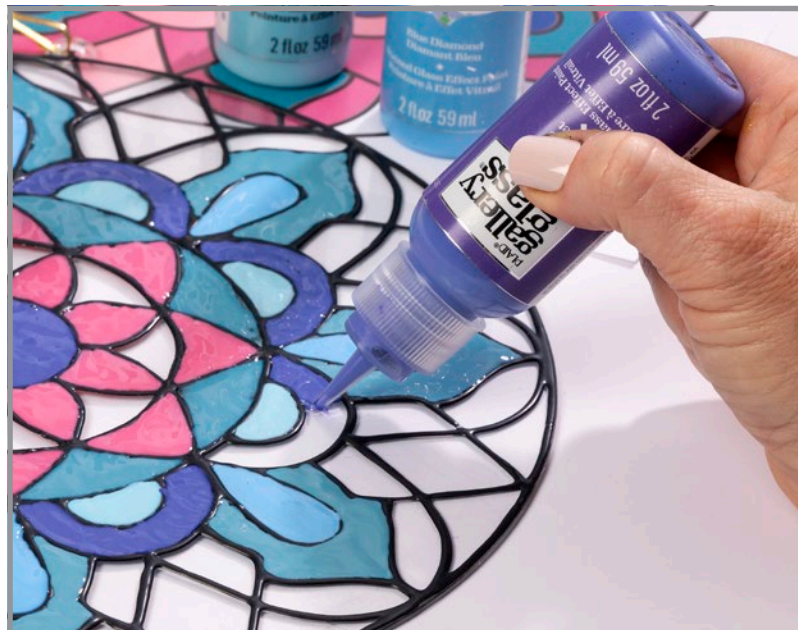
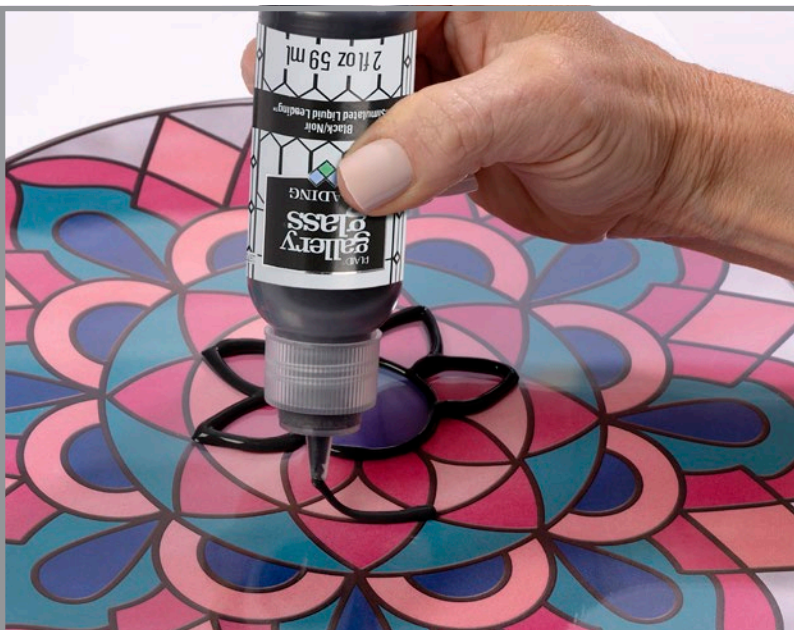
Create a realistic stained glass look by painting directly on your projects!

Choose from a variety of vibrant colors and paint on your surface vertically or horizontally.

Easily peel and reposition your design or create a permanent piece of glass art.

Pair with Gallery Glass tools, pattern sheets, surfaces, and paint sets to make your glass projects look like real stained glass.

Simply Outline with Leading & Fill with Color!





Connect & Share!

Join our community of Gallery Glass crafters! Share your Gallery Glass creations, ask and answer questions, and get inspired with fellow Gallery Glass fans in the Gorgeous Gallery Glass Facebook Group. Follow Plaid Crafts on YouTube, Facebook, Instagram, and TikTok for more Gallery Glass inspiration.

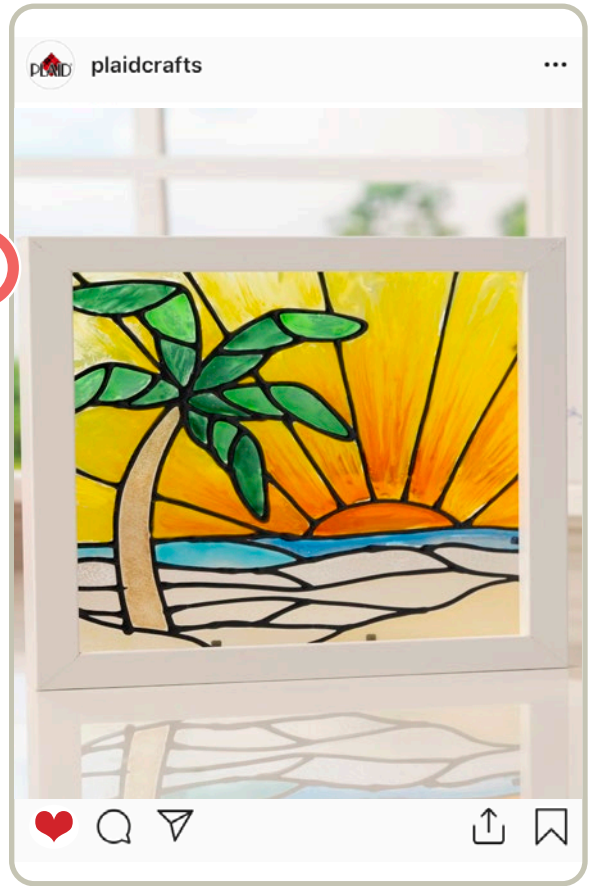
Shop all the Gallery Glass supplies you'll need to get started, including paint kits, tools, surfaces, free patterns, and more at Plaidonline.com.

Create. Share. #PlaidCrafts

@PlaidCrafts (Look for us on Facebook, Instagram, YouTube, Pinterest, & TikTok)



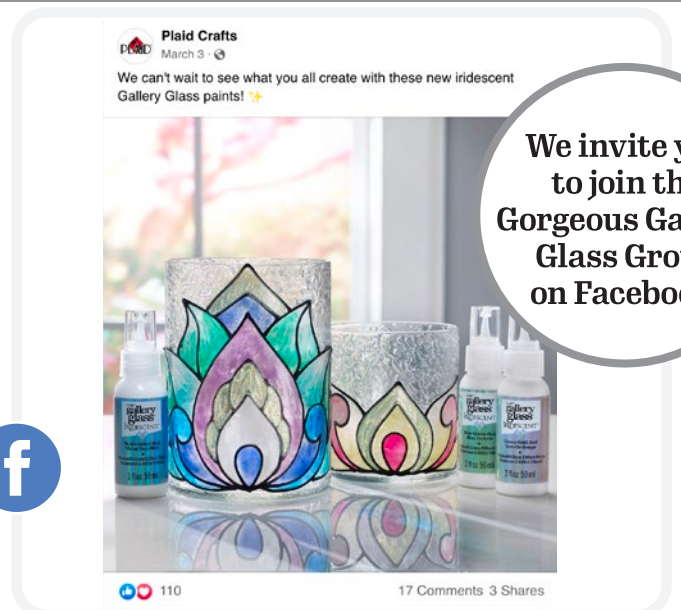
How-To Videos



Step-By-Step Instructions



Inspirational Projects

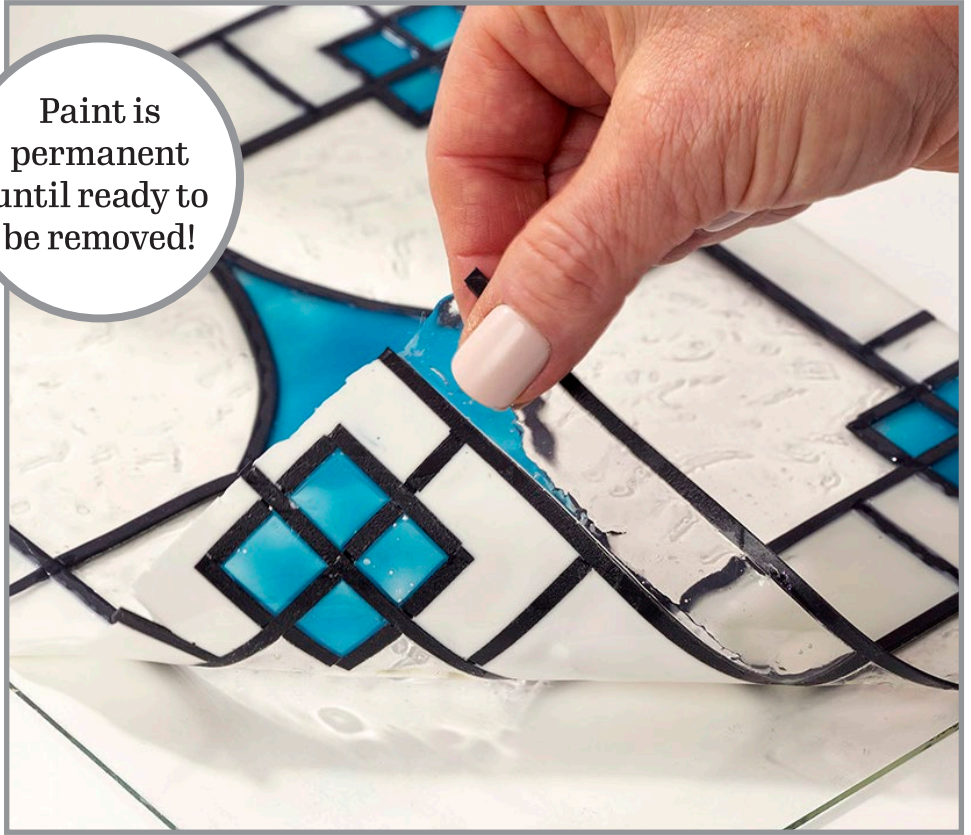


We invite you to join the Gorgeous Gallery Glass Group on Facebook!

Permanent & Removable on Glass



Paint is permanent until ready to be removed!



Apply Vertically or Horizontally





CONTENTS

Gallery Glass Paints	6
Paint Sets	11
NEW Confetti Paints	12
Glitter Paints	14
Shimmer Paints	16
Iridescent Paints	18
Metallic Paints	20
Glow Paint	22
NEW Crackle Medium	23
NEW Faux Etch Paint	24
NEW Etching Cream	25
Liquid & Instant Leading	26
NEW Ready-to-Cut Leading Sheets	28
NEW Cuttable Craft Plastic	29
NEW Crystal Clear Beads	30
Tool Set	31
Surfaces	32
Patterns	34

QUICK LINKS

These links will open in a new window or tab

[Shop online at Plaid's Gallery Glass Store](#)

[Read or download Plaid's Getting Started Guide to Gallery Glass](#)

[Watch Plaid's series of tutorial videos](#)

[Browse Plaid's library of free downloadable patterns](#)



Stained Glass Effect Paint

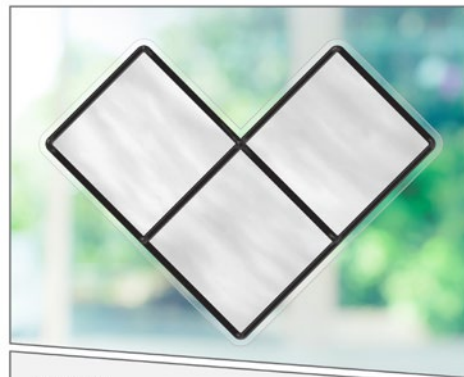
Choose from a variety of vibrant colors to create a realistic stained glass look. From show-stopping window designs to gorgeous glass art accents, clings and seasonal décor, Gallery Glass is the affordable way to create the look of real stained glass.

- Vertical and horizontal application
- Paint is permanent until ready to be removed
- Provides privacy while allowing light to come through
- Water-based, non-toxic





19729
Snow White
transparent



19692
Bright White
opaque



19715
White Pearl
opaque



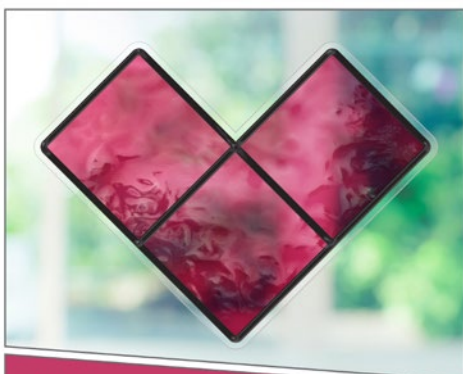
20038
Cameo Ivory
transparent



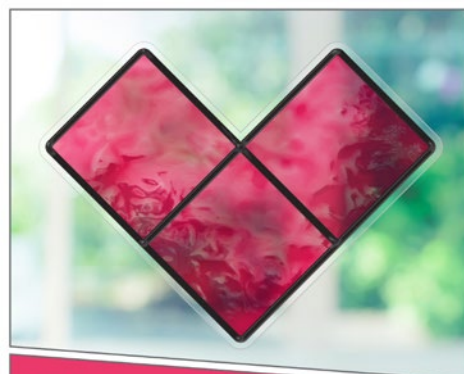
19782
Peach Tea
opaque



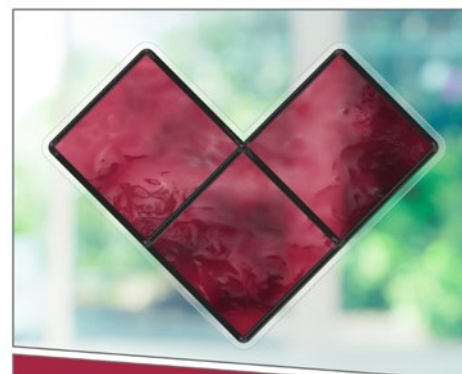
20039
Pale Pink
Opaque



19711
Rosy Pink
transparent



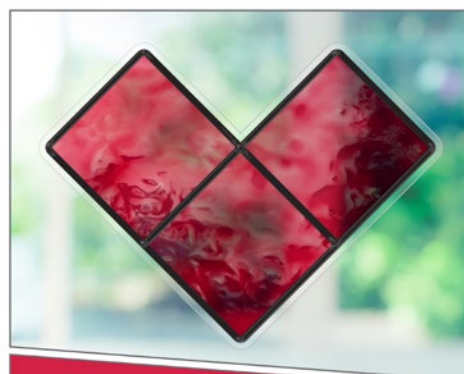
19694
Magenta Rose
transparent



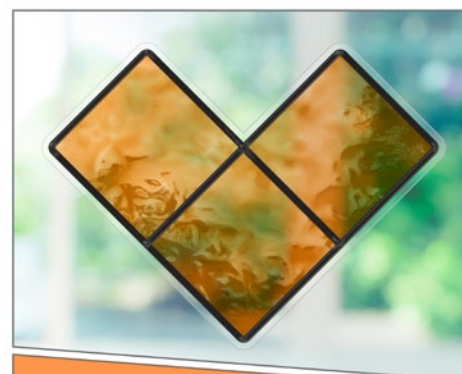
19696
Holiday Berry
transparent



19691
Ruby Red
transparent

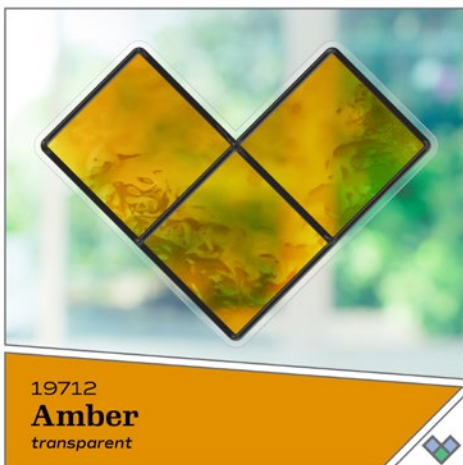
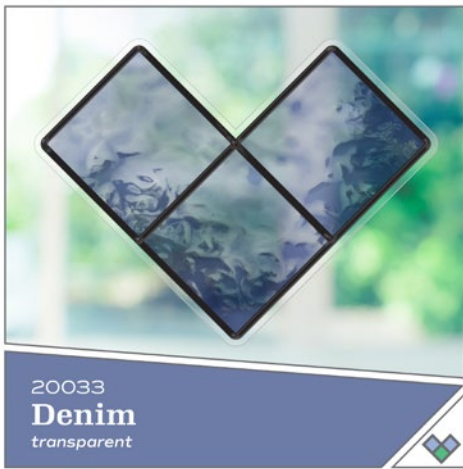


19777
Real Red
transparent



20031
Peach
transparent







19778
Jet Black
transparent



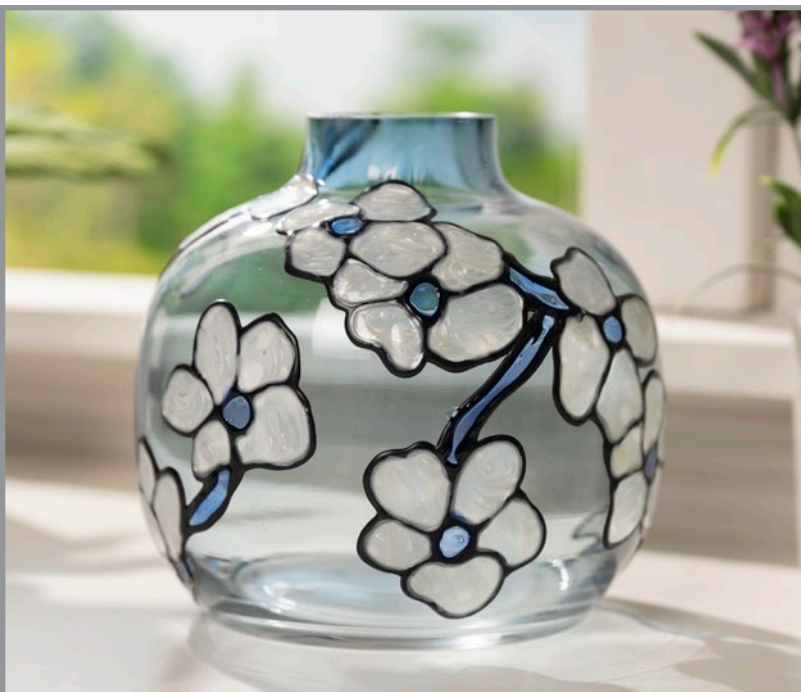
19693 - 2oz 19699 - 8oz
Crystal Clear
transparent



19724
Clear Frost
transparent



19695
Frost Root Beer
transparent



Paint Sets

These curated kits come in a variety of vibrant and pastel colors with a unique, glass-like finish. Simply outline with Gallery Glass Liquid Leading, then fill with Gallery Glass Stained Glass Paint to add a unique touch to your glass projects.

- Each set include five colors and one black Liquid Leading
- Vertical and horizontal application
- 2 oz, easy-squeeze bottle with fine-tip applicator
- Water-based, non-toxic



NEW 20053
Pastel



19682
Basic



19683
Floral

NEW!

Stained Glass Effect Paint Confetti

Large holographic glitters float within this stained glass effect paint. Apply with a brush for a realistic confetti glass effect.

- Add shimmer and shine to Gallery Glass projects
- 2 oz bottle with wide mouth
- Water-based, non-toxic





Stained Glass Effect Paint Glitter

Add a dazzling touch to windows or glass décor. Choose from two radiant colors for a sparkling finish.

- Large glitters add glitz and glam
- Vertical and horizontal application
- 2 oz, easy-squeeze bottle with fine-tip applicator
- Water-based, non-toxic

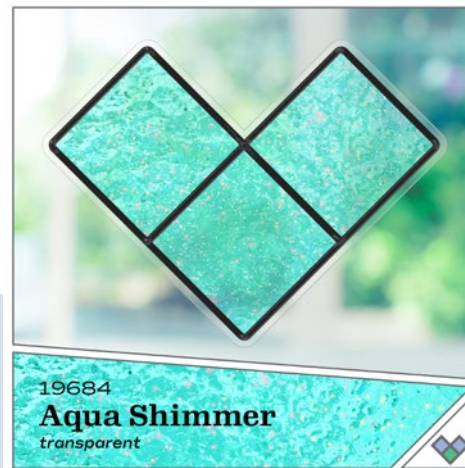




Stained Glass Effect Paint Shimmer

Accent stained glass projects with shimmer and shine! Holographic glitters create a sparkling effect.

- Vertical and horizontal application
- 2 oz, easy-squeeze bottle with fine-tip applicator
- Water-based, non-toxic





gallery glass shimmer
Aqua Shimmer
Aqua Chatoyant
Stained Glass Effect Paint
Peinture à Effet Vitrail
2 fl oz 59 ml

gallery glass shimmer
Hologram Shimmer
Hologramme Chatoyant
Stained Glass Effect Paint
Peinture à Effet Vitrail
2 fl oz 59 ml

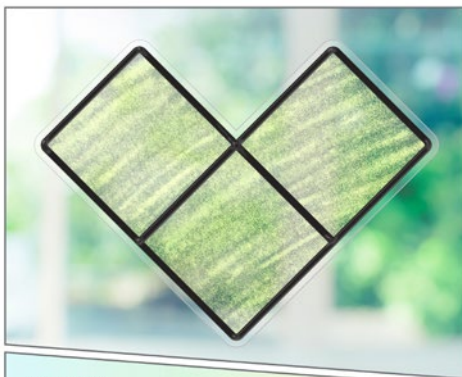
gallery glass shimmer
Rose Shimmer
Rose Chatoyant
Stained Glass Effect Paint
Peinture à Effet Vitrail
2 fl oz 59 ml

gallery glass shimmer
Green Shimmer
Vert Chatoyant
Stained Glass Effect Paint
Peinture à Effet Vitrail
2 fl oz 59 ml

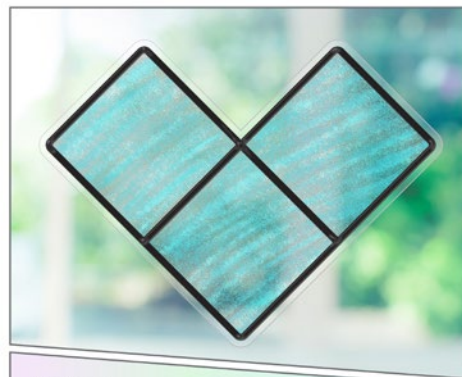
Stained Glass Effect Paint Iridescent

This unique formula reveals multiple shimmering colors when viewed from different angles. Make glass projects stand out with this kaleidoscope of colors!

- Specialty pigments create an iridescent finish
- Adds movement to your projects
- Vertical and horizontal application
- 2 oz, easy-squeeze bottle with fine-tip applicator
- Waterbased, non-toxic



19669
Iridescent Blue/Green/Gold
transparent



19670
Iridescent Violet/Green/Blue
transparent



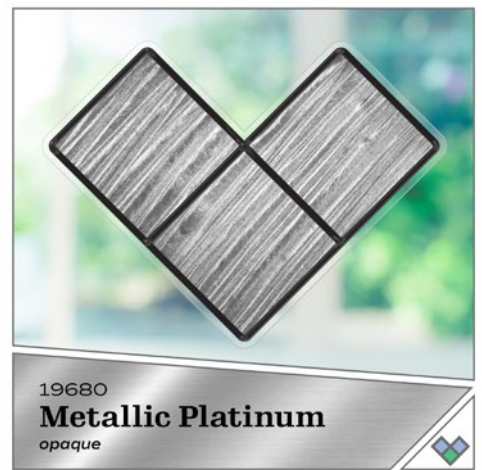
19671
Iridescent Green/Gold/Red
transparent



Stained Glass Effect Paint Metallic

Add luxury and shine to glass projects. Each metallic color has rich pigments to create a stunning metallic finish.

- Vertical and horizontal application
- 2 oz, easy-squeeze bottle with fine-tip applicator
- Water-based, non-toxic





Stained Glass Effect Paint Glow

Gallery Glass Glow-in-the-Dark Stained Glass Paint brings a radiant glow to windows and décor. Emphasize glass art with neutral, glowing pigments for an illuminating opaque finish. Charge in sunlight or indoor light to capture a glowing, glass-like effect.

- Glow pigments illuminate projects
- Recharge in sunlight or indoor light
- Vertical and horizontal application
- 2 oz, easy-squeeze bottle with fine-tip applicator
- Water-based, non-toxic



Neutral
in
daytime...



Glow
brightly
in
the dark!



NEW!

Stained Glass Effect Medium Crackle

Add a vintage look to glass projects with Gallery Glass Crackle Medium. This one-step fine crackle medium allows you to create a realistic cracked glass effect. Simply brush this unique formula over dried Gallery Glass paint to achieve a realistic weathered and worn look.

- Goes on milky white, dries to a clear crackle finish
- Apply with a brush over dried Gallery Glass paint
- 2 oz, easy-squeeze bottle
- Water-based, non-toxic



NEW!

Stained Glass Effect Paint Faux Etch

Create the look of real glass etching with Gallery Glass Faux Etch. Simply sponge this unique formula onto your glass projects to create beautiful glass art. This permanent formula can be used with stencils or tape on glass and plastic surfaces.

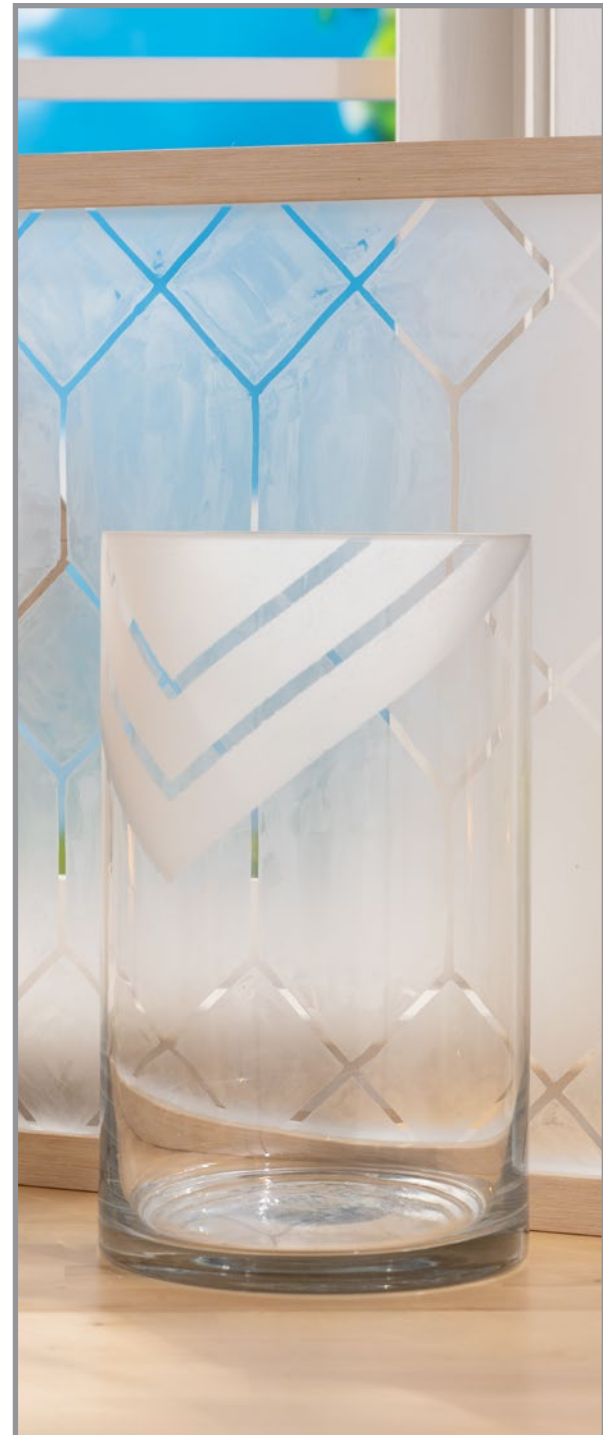
- Permanent on glass
- Sponge-on application
- 2 oz, easy-squeeze bottle with wide mouth
- Water-based, non-toxic



NEW! Etching Cream

Use Gallery Glass Etching Cream to permanently etch glass surfaces. This formula is dishwasher safe once dried and rinsed, making it the perfect medium for glasses and dishware. Combine Etching Cream with Gallery Glass Liquid Leading for one-of-a-kind patterns and designs. Simply outline with Gallery Glass Liquid Leading, apply the Gallery Glass Etching Cream onto your surface, remove the leading once dried, rinse, and reveal.

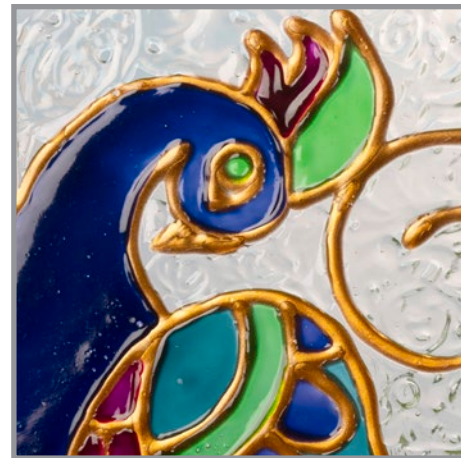
- Permanent on glass
- Dishwasher safe
- 2.98 oz bottle



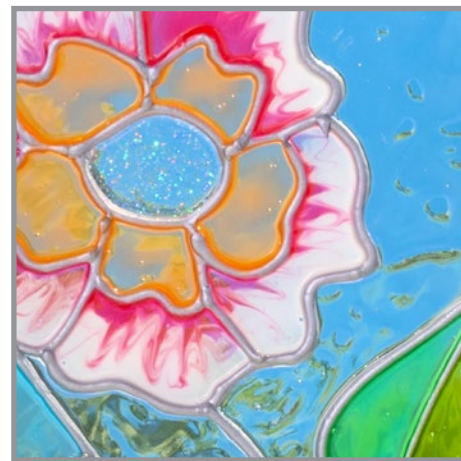
Liquid Leading

For intricately detailed stained glass designs, use Gallery Glass Liquid Leading! Use this versatile stained glass paint to simulate the look of real leading lines in your faux stained glass designs. Each bottle of Gallery Glass Liquid Leading comes with an easy-to-use applicator tip allowing for clean and smooth lines.

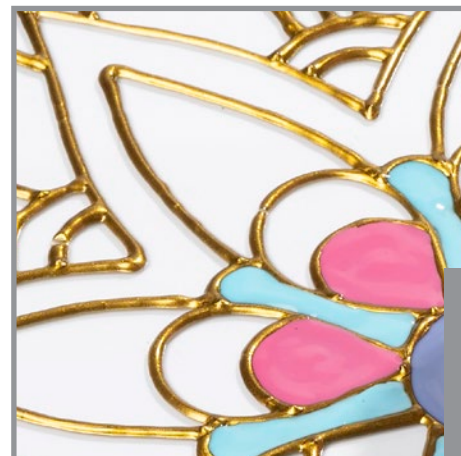
- 3-D paint creates dimensional lines to simulate stained glass leading
- Convenient applicator tip
- Easy-squeeze bottle
- Water-based, non-toxic



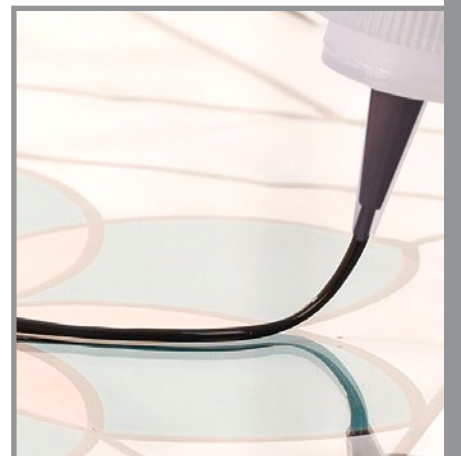
NEW
19678 (2 oz)
Liquid Leading
Bronze



NEW
19704 (2 oz)
Liquid Leading
Silver



19703 (2 oz)
Liquid Leading
Gold



19702 (2 oz)
19701 (8 oz)
Liquid Leading
Black

Instant Leading

Instant leading lines are made with a flexible and repositionable adhesive backing that is easy to peel-and-stick to any glass or plastic surface. Simulate the look of authentic stained glass leading and create perfectly straight lines and smooth curves. Great for vertical or horizontal application. Available in a 36 ft roll and 72 ft value pack.

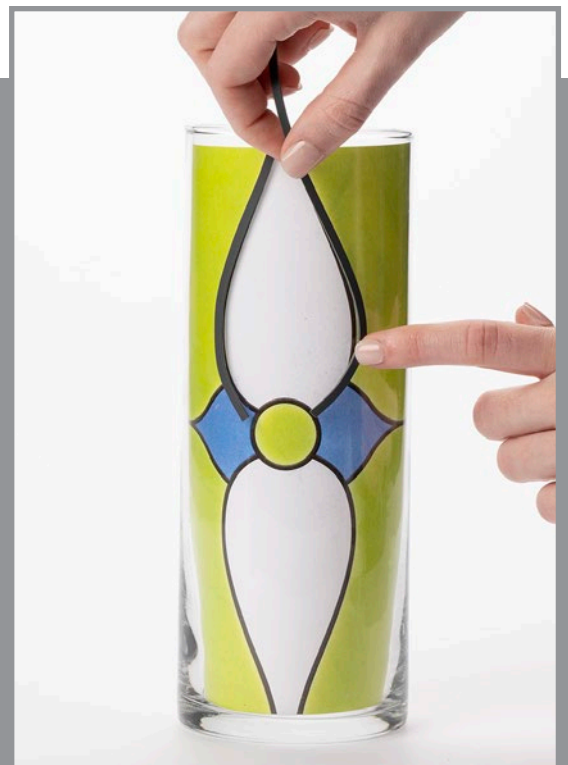
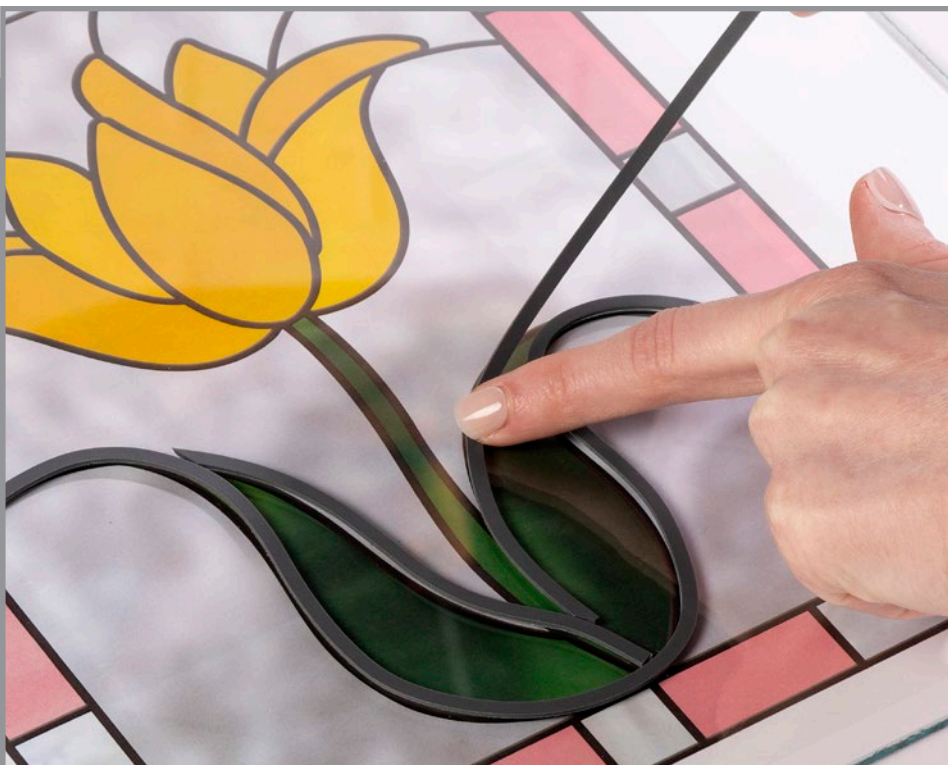


19720
Instant Leading Roll
36 Feet



16690
Instant Leading Lines
Value Pack
72 Feet

Simply Peel & Stick- Apply to 2D & 3D Objects



NEW!

Ready-to-Cut Instant Leading Sheets

Create custom designs that simulate the look of authentic stained glass leading. Flexible and repositionable material easily sticks to glass or plastic surfaces. These 12" x 12" sheets can be loaded into a cutting machine and used with free Gallery Glass patterns, or with your own custom designs! Perfect for lettering and fine details. Makes two large projects up to 12" x 12" or four small projects up to 6" x 6".

- Includes two 12" x 12" sheets of instant leading material
- Great for vertical and horizontal application
- Ready to cut
- Adhesive backed



NEW
20074
Ready-to-Cut
Instant Leading Sheets
2 Sheets

Easy to Cut:



with a digital cutting
machine



with scissors



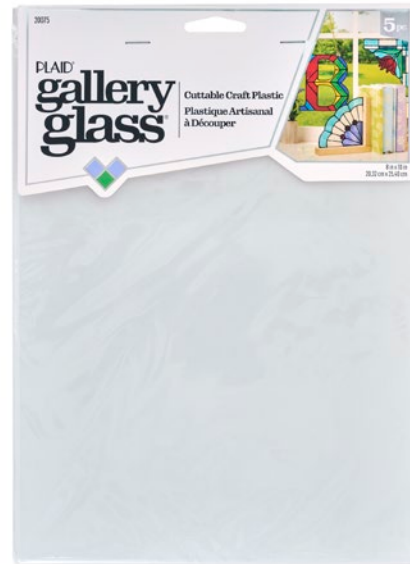
or with a craft knife!



NEW! Cuttable Craft Plastic

Use these clear plastic sheets to create a wide range of Gallery Glass projects including custom window hangings, 3D objects, jewelry, home décor and more. Easily cut the clear and flexible plastic with a craft knife or scissors to create a permanent surface for applying Gallery Glass paints and leading. Includes five 8 1/2" x 10" sheets.

- Five 8 1/2" x 10" sheets
- Flexible & clear plastic
- Note: Gallery Glass Paint is not removable from plexi-glass surfaces



NEW
20075
Cuttable Craft Plastic
5 Sheets

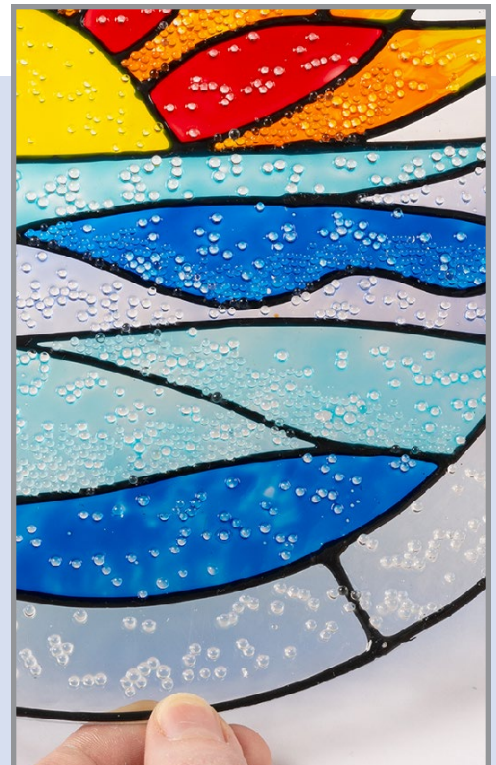


NEW! Crystal Clear Beads

Add texture and depth to glass art with Gallery Glass Crystal Beads. Apply over wet Gallery Glass paint and let dry. Crystal Beads will adhere to the surface, adding a reflective, glistening effect to your project. Use Crystal Beads on flat glass or plastic surfaces to easily give your stained glass art a fresh, dimensional look.



NEW
19751
Crystal Clear Beads
62 grams



Tool Set

Expand your love of stained glass art with the Gallery Glass Four Piece Tool Set! This handy set is an essential part of creating realistic stained glass effects with ease. This set includes a scraper for spreading or removing paint, a metal combing tool for smoothing paint and removing bubbles by combing or tapping underneath, a cutter for cutting instant leading, fixing mistakes, creating clean edges or peeling up dried lines, and a scoop for removing excess paint from your project or to mix colors.



19739
Tool Set
4 pc



Combing Tool
Comb Paint & Remove Bubbles



Scoop
Easily Apply or Remove Excess Paint



Cutter
Trim & Remove Paint



Scraper
Removes Large Areas of Paint



Surfaces

Create beautiful window décor with Gallery Glass Surfaces! These packs of three transparent plexi-glass plastic surfaces feature a hang hole and beveled edges for a finished look with no framing required. Use these transparent shapes to craft stunning designs with Gallery Glass Patterns or create custom freehand designs.

- Plexi-glass surfaces are the perfect, permanent surface for Gallery Glass projects
- Edges are beveled for finished look- no framing required
- Hang hole added in mold for easy display
- Pack of three
- Versatile, transparent shapes
- Note: Gallery Glass Paint is not removable from plexi-glass surfaces



19766
6" Circle
3 pc



19768
5" Oval
3 pc



19769
6" Hexagon
3 pc

Large Surfaces

These plexi-glass plastic surfaces measure 10" in diameter and feature a gold finished chain that is easy to hang and display. Use these transparent shapes to craft stunning designs with Gallery Glass Patterns or to create custom designs. Simply outline your design with Gallery Glass Liquid Leading, then fill with Gallery Glass Stained Glass Paint.

- Plexi-glass surfaces are the perfect, permanent surface for Gallery Glass projects
- Gold-finished display chain included
- Versatile, transparent shapes
- Note: Gallery Glass Paint is not removable from plexi-glass surfaces



19744
10" Circle with chain
1 pc



19746
10" x 8" Oval with chain
1 pc

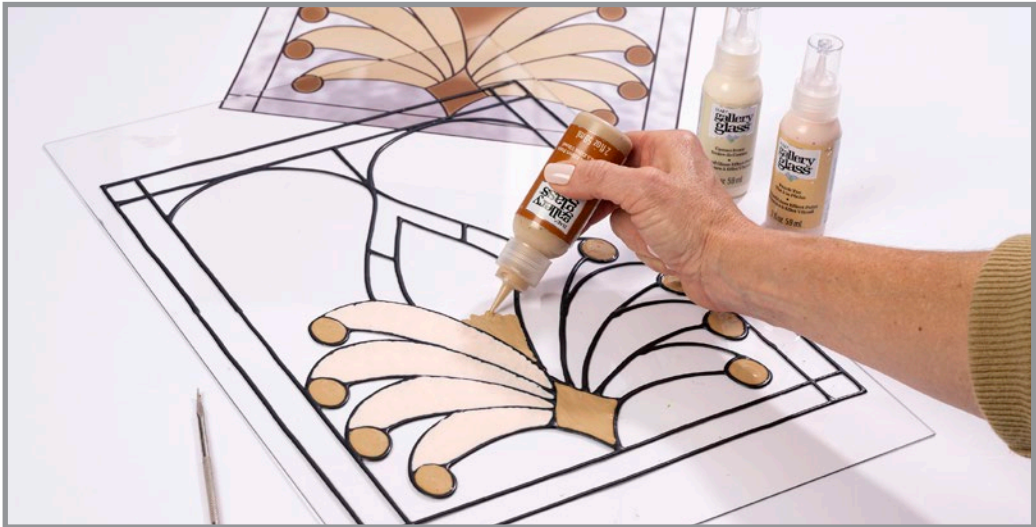
Pattern Packs

Gallery Glass Paper Pattern Packs include fun and easy-to-follow designs in a variety of shapes and sizes. Each pack includes three sheets of full-color, front and back patterns, perfect for beginners and experts. Simply place the design under your surface, trace, fill, and let dry.

- Features an array of designs in a variety of shapes and sizes
- Patterns are fully colored: use our suggested color palette or create your own!
- Unfolded sheets measure 16" x 32" each
- Includes detailed instructions on how to use and how to resize



Place, Trace, & Fill!



NEW! Animals

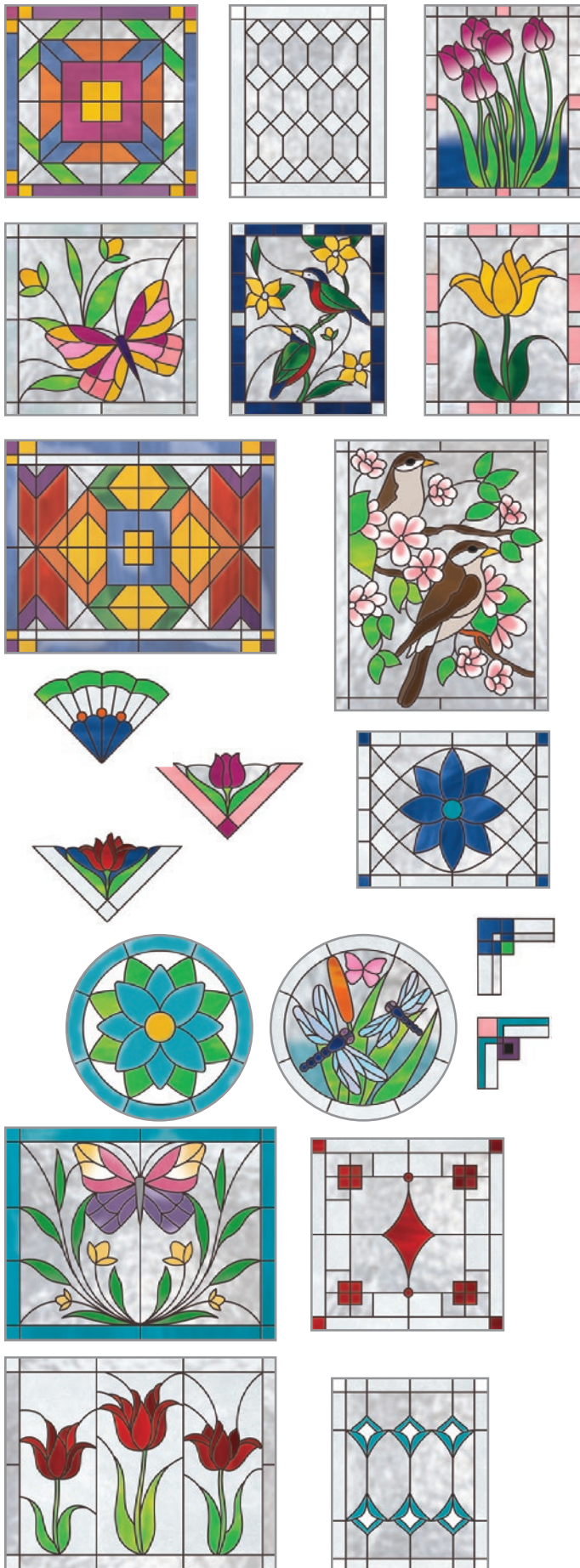


21
Unique
Designs



NEW
19772
Animals
21 Designs:
6" x 6" (6)
8" x 10" (6)
10" x 10" (6)
11" x 14" (3)

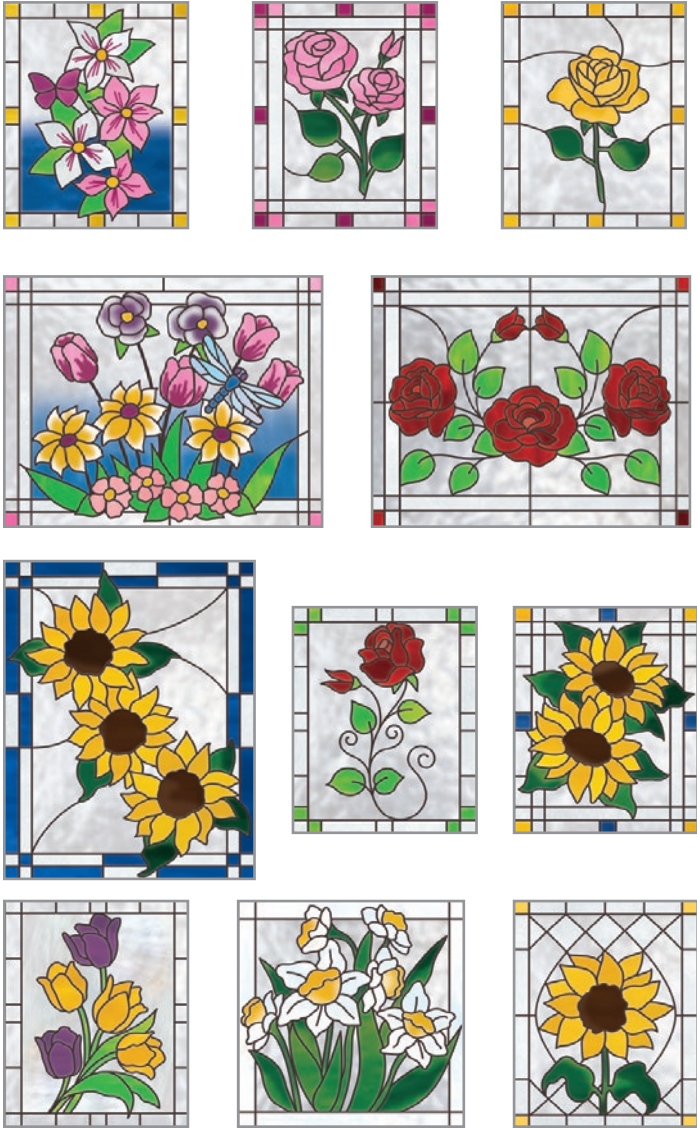
Traditional



19735
Traditional
20 Designs:
8" x 10" (6)
10" x 10" (5)
11" x 14" (4)
Accents (5)

20
Unique
Designs

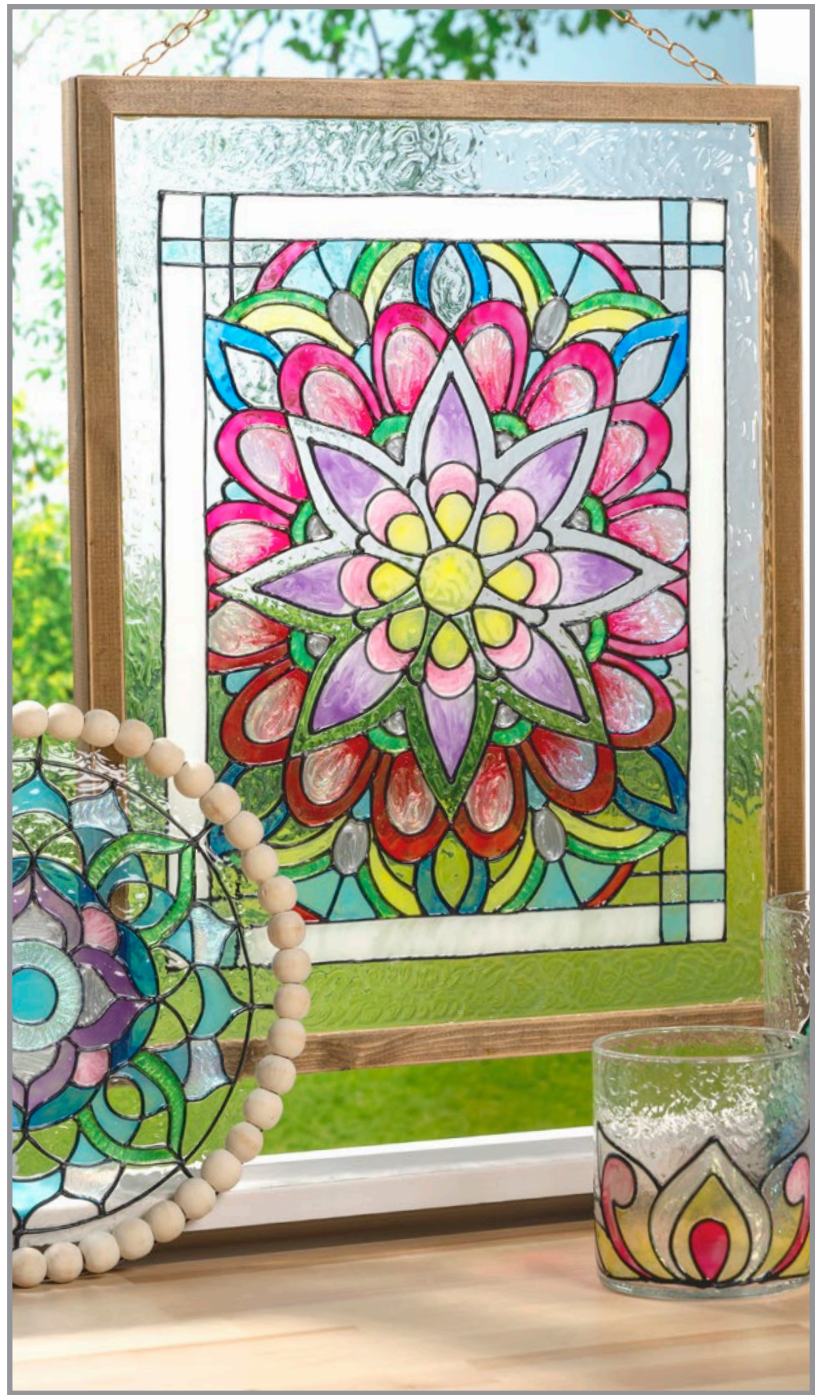
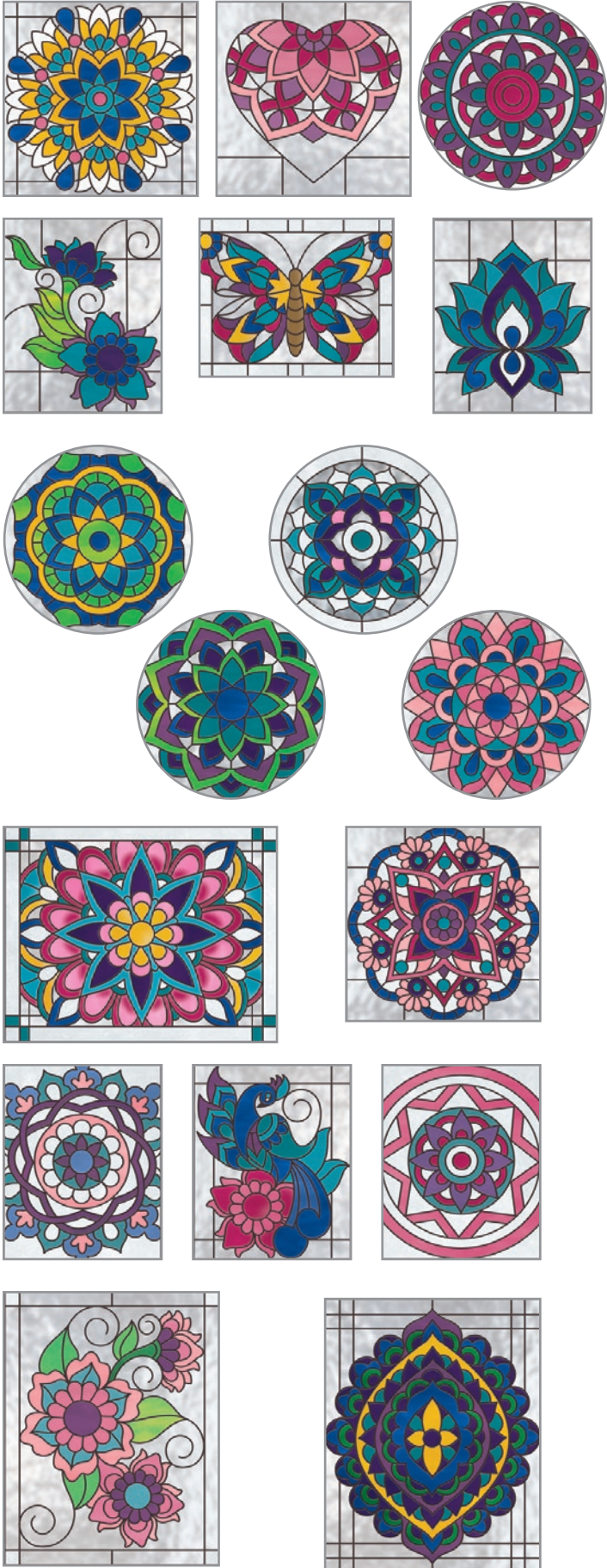
Floral



19736
Floral
17 Designs
8" x 10" (7)
10" x 10" (7)
11" x 14" (3)

17
Unique
Designs

Mandala



17
Unique
Designs



19771
Mandala
17 Designs
8" x 10" (6)
10" x 10" (8)
11" x 14" (3)

Scenery



19773
 Scenery
 16 Designs
 8" x 10" (6)
 10" x 10" (6)
 11" x 14" (4)

16
 Unique
 Designs





©2024 PLAID ENTERPRISES, INC.
P.O. BOX 7600, NORCROSS, GA 30091 • (800) 842-4197

For ideas and inspiration visit:
plaidonline.com/GalleryGlass

Create • Share
[#plaidcrafts](https://twitter.com/plaidcrafts)